



FRANCISCAN GARDENS
CANTERBURY

ACCESS STATEMENT

ACCESS TO OUR GROUNDS AND FACILITIES

Access information & possible obstacles you may encounter when visiting is included in this document. For any additional information not covered, please do contact us.

The gardens are composed of many different pathways, surfaces and gradients. The visitor route is prominently a mix of grass and gravel. There are several benches and spaces in the gardens and additional seating on the first floor of the chapel.

The Gardens do not have toilet facilities on site.
We welcome dogs and have a water bowl for any pets.

GREYFRIARS CHAPEL

The flooring in the entire Greyfriars Chapel is wooden.
Please be aware that the flooring is uneven and can be slippery.



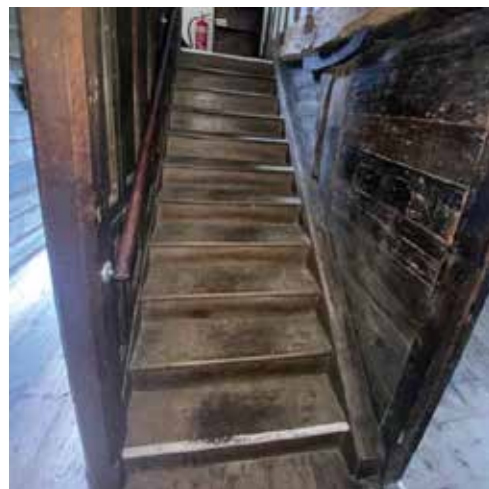
There are two steps to enter the chapel.
The first step is 22mm, followed by a 12mm step



After entering the Chapel, the room on the right-hand side has a 21.5mm step



There is a 10mm step to enter the prison.



The main Chapel is accessed via a 17 step staircase with 18mm steps.

WILD MEADOWS



For people bringing dogs to the gardens, please be aware that there is a Ragwort in the meadows which is toxic to dogs.

TEMPORARY PATHWAY



There is unstable gravel along the entrance pathway.

STEPS BY THE BRIDGE



To continue on the main route, you will need to use four steps by the bridge.

Alternatively, if you cannot physically make the steps, please let one of the staff know who will show you another route.

Ascending, the sizes of the steps are:

The bottom step is 10mm, followed by 6.9mm, 7mm and the top step is 7mm.

VICTORIAN WINERY



The main route will lead you through the cherry tree, immediately after will be a slight drop of 8mm.

REAR OF THE SHOP



As soon you leave the shop there is a large step. From its highest point it is approximately 15.8mm.